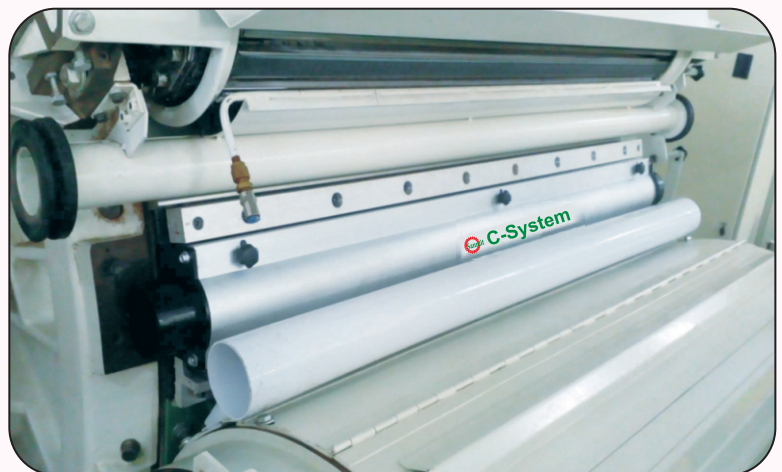
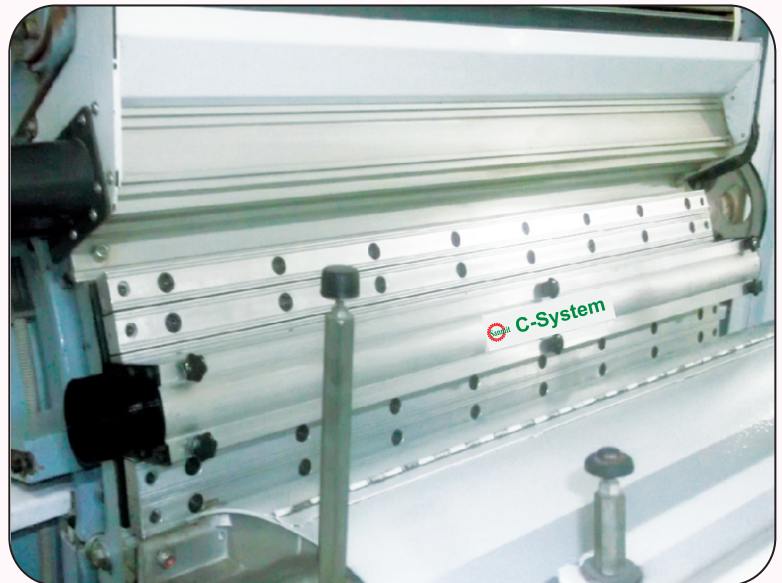
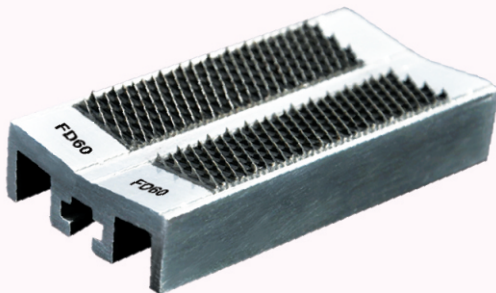
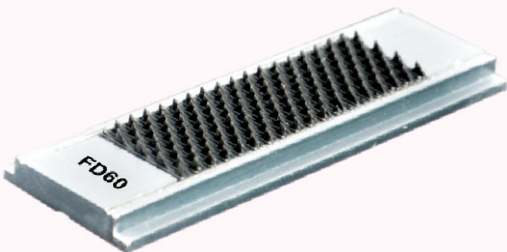
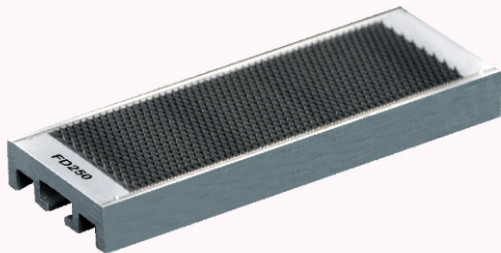
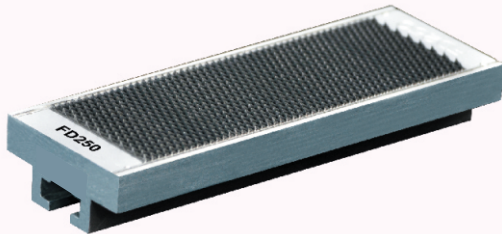
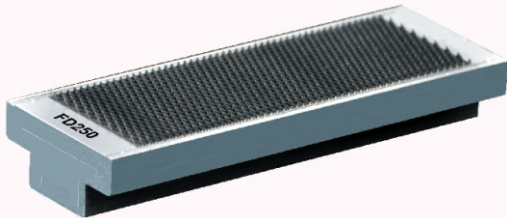




New Generation C - System



5F + 1K - Front Conversion (SFD)

SM.3H/SM.3HA/SM.3HA-V3/SM.3HA-V4

Sanmit Card Clothing India Pvt Ltd

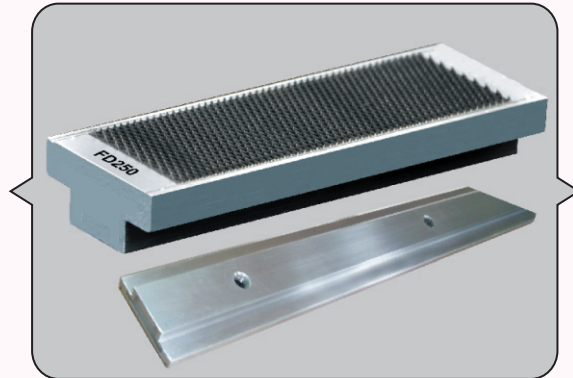
Stationary Flat Tops



Type-H (Threaded Type)

Sanmit products fit for all 40" Cards

S.No.	Sanmit Model
1.	SM.3HA (Front - SFD)
2.	SM.3HA - V3 (Front & Back), SM.3H33 (Front & Back) SM.3H61 & SM.3H63 (Front & Back)
3.	C.1/2, C.1/2a, C.1/3 & SM.H (Front & Back) C - System and C-Factors for all Card
4.	C - System for SFL & SFD for C.1/3, SM.3H, SM.3HA, SM.3HA - V3/V4, SM.3H3 (Front Conversion (SFD))

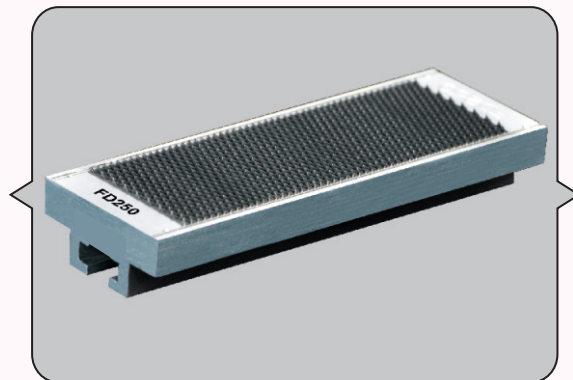


PPSI
FD 90 A
FD 150 A
FD 250 A
FD 350 A
FD 450 A
FD 550 A
FD 650 A

Sanmit products fit for all 40" Cards

S.No.	Sanmit Model
1.	SM.3H (SFD - Front & SFL - Back), SM.3HA (SFL - Back Side) & SM.3H333 (Under Licker - in)
2.	D-K760, D-K760 - old, D-K780, D-K800 & D-K803 (Existing 3 Flat C - System)
3.	D-K803 & D-K903 (Under Licker - in Segments)
4.	C - System for all cards (Screw type)

Type-A (Screw Type / Slot Type)



PPSI
FD 90 A
FD 150 A
FD 250 A
FD 350 A
FD 450 A
FD 550 A
FD 650 A

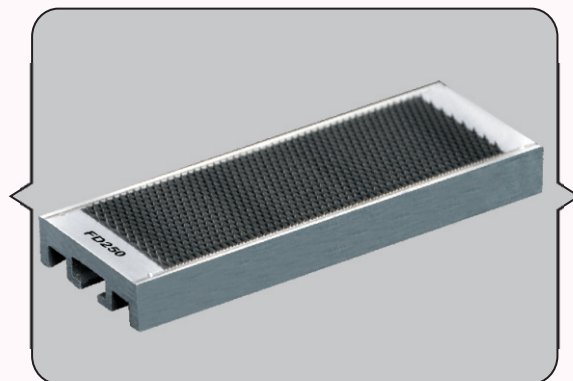
Sanmit products fit for all 60" Cards

S.No	Sanmit Model
1.	INGOLSTADT - SSKU12

Sanmit products fit for all 40" Cards

S.No	Sanmit Model
1.	D-K715, D-K740, D-K760 (Aluminium Base), D-K800 (Twin Flat), D-K803 (Twin Flat), D-K903, T-C 03 / 05 / 06 / 07-S / 08 / 11 / 15 & All Twin Flat System Carding Machines
2.	MK - 4, MK - 5, MK - 5A, MK - 5B, MK - 5C, MK - 5D, MK - 6 & MK - 7
3.	C.1/2, C.1/2a, C.1/3, T.C 360, I.C.C T.C 450, C 4, C 10, C 50 & C 51
4.	HOWA- CMSK - 3, CMSK - 4 & CMSK - 5, CM300 & CMS80
5.	TOYODA & TOYODA MEIKIN All model
6.	JFA 186, JFA 201, JFA 203, JFA 203A, JFA 203B, JFA 212, JFA 225, JFA 226, JFA 227, JFA 228, JFA 231C, JWF 1203, JWF 1204 & all other CHINESE cards
7.	I.C.C - C - System & Under Licker - in Segments for all Carding Machines
8.	JAPANESE All Carding machines
9.	C 40, C41, CX 300, CX 400, CX 501 & CX 601 (Front, Back & Under Licker-in)

Type-B (Screw Type / Slot Type)



PPSI
FD 90 A
FD 150 A
FD 250 A
FD 350 A
FD 450 A
FD 550 A
FD 650 A

Sanmit products fit for all 50" Cards

S.No	Sanmit Model
1.	T-C 11 / 15

Sanmit products fit for all 60" Cards

S.No	Sanmit Model
1.	C60, C61 & C70
2.	C701
3.	SM.6H36

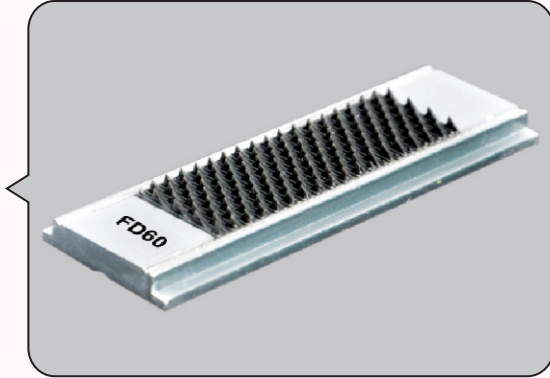
Stationary Flat Tops



Sanmit Products Under Lickerin Segments - Suitable for 40" cards

S.No.	Sanmit Model
1.	D-K715, D-K740, D-K760, D-K780 & D-K800
2.	C.10, C.50 & C.51
3.	C.1 /2, C.1/2a, C.1/3, SM.H, SM.3H, SM.3HA, SM.3HA-V3, SM.3HA-V4, SM.3H61, SM.3H63, T-C 360, T-C450 & other 40" cards
4.	JFA 186, JFA 201, JFA 203, JFA 203A, JFA 203B, JFA 212, JFA 225, JFA 226, JFA 227, JFA 228, JFA 231C, JWF 1203, JWF 1204 & other CHINESE cards
5.	BLOW ROOM CVT - 3 & CVT - 4 (FD 60)

Type-C (Slide Type)

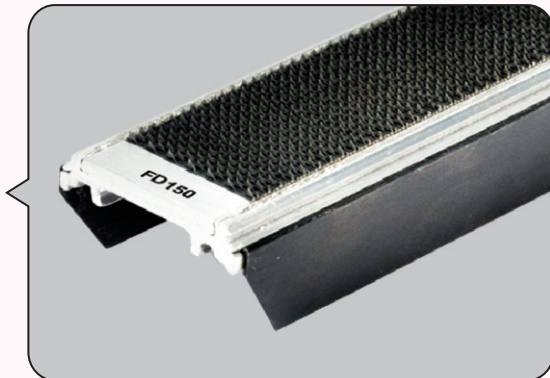


PPSI
FD 60
FD 90

Sanmit Products fit for all 40" cards

S.No.	Sanmit Model
1.	MK - 4 & MK - 5 (Clip type C - System)
2.	D-K715, D-K740 & D-K760 (Cast Iron & Al. C - System)
3.	JFA 186, JFA 201A, JFA 201B, JFA 231A, JFA 221D, C - System & Chinese Cards
4.	HOWA - CMSK 3 & CMS 80 / TOYODA - CK7 & TOYODA MEIKIN
5.	Clip Type C - System for all Carding Machines

Type-G (Clip Type)

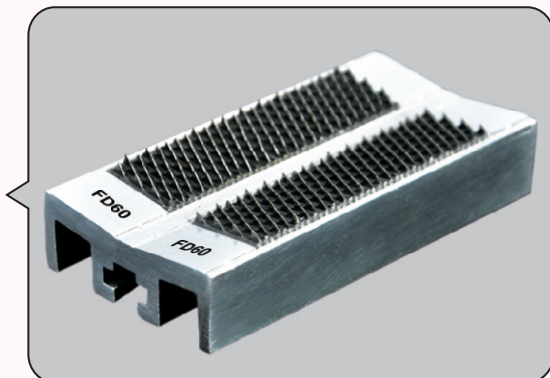


PPSI
FD 90 A
FD 150 A
FD 250 A
FD 350 A
FD 450 A
FD 550 A
FD 650 A

Sanmit Products Under Lickerin Segments - Suitable for 40" cards

S.No.	Sanmit Model
1.	T-C03 / 05 / 5-3 / 06 / 07-S / 08 / 10

Type-F (Screw Type)



PPSI
FD 90

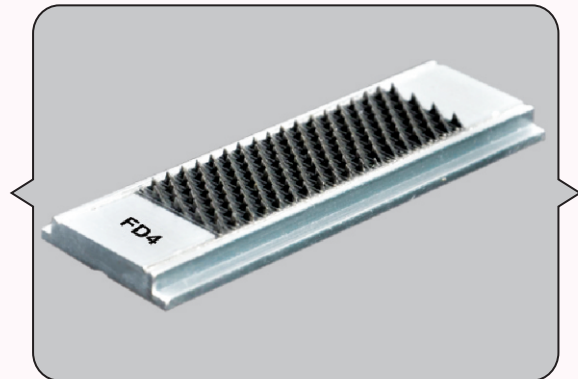
Stationary Flat Tops



Sanmit Products for UNIFLEX Carding Segment

S.No.	Sanmit Model
1.	B60 (Uniflex)

Type-D (Slide Type)



PPSI
FD 4

Sanmit Products Under Lickerin Segments - Suitable for 40" cards

S.No.	Sanmit Model
1.	C4

Type-E (Slide Type)



PPSI
FD 60

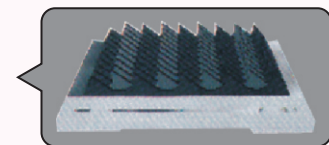
Type-K (Twin Row)



PPSI
FD 60

Original cast iron underlickerin segments for D-K715 / D-K740 Cards.

Type-L (Slide Type)



PPSI
FD 60

ECC underlickerin segments for HOWA Cards.

Salient Features

- ❖ Aluminium end caps with extra locking punch holes ensures double safety for SF wires.
- ❖ Scratch free Aluminium coating gives better aesthetic appearance.
- ❖ Burr free and smooth finish, protects the fibre from breakage as a more gentle carding action results highest yarn strength.
- ❖ Higher nep removal efficiency and lower shot fibre content after the initial mounting and throughout the service.
- ❖ Long service life and greater added value.

Combing Segment (Licker-in) / RSK Pin Beater Segment



Salient Features

Construction of assembly is replaceable slide (strip) type.

Economic replacement for conventional araldite and punched sheets combing segments.

Sharp points gives better pre-openings that results in minimum loss of good fibres.

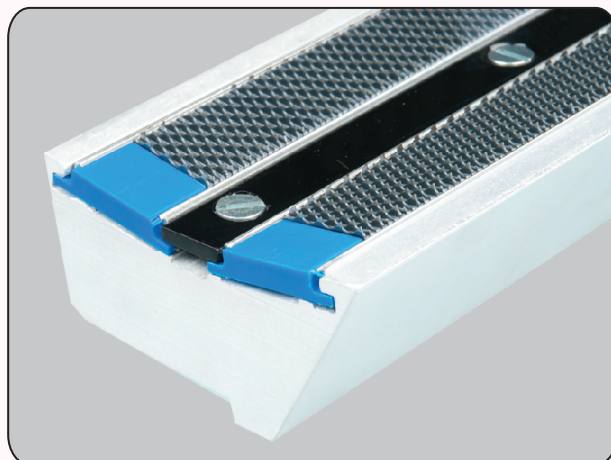
Aluminium combing bars are made out of alloy grade smooth finish extrusion materials which gives flat stability.

Machine original mote knives can be fixed without any alterations in assembly.

Easy replaceable and cost economic during replacement time.

Suitable: C.1/2, C.1/2a, C.1/3, SM.H, SM.3H, SM.3HA & SM.3HA - V3 / SM.3HA - V4.

Combing Segment - Economic Model (2 Aluminium Bar + 4 Strips)



Pre Opening Combing Segments - (Individual Gauging)

Salient Features

Construction of assembly is individual gauge setting and replaceable slide (strip) type.

Individual gauge setting ensures accurate gauging which results in better opening of fibre tufts in lickerin zone.

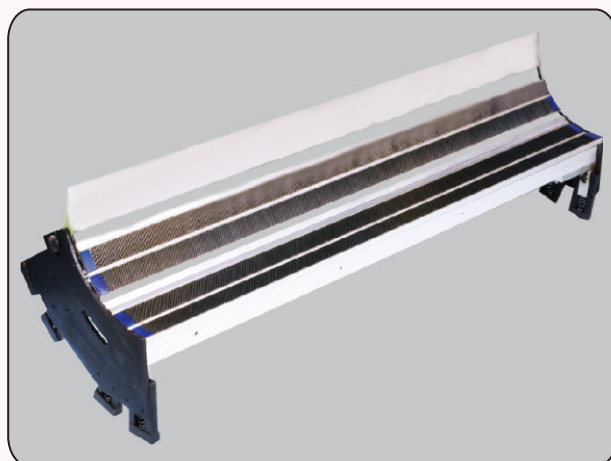
Sharp points gives better pre-opening that results in minimum loss of good fibres.

High quality hardened mote knives help to remove smaller and heavier trash particles results good reduction of neps in lickerin zone.

Easy replaceable and cost economic during replacement time.

Made out of high grade individual flat aluminium bars which gives more stability to ensure accurate gauging.

Suitable: D-K715, D-K740, MK4 & MK5.



RSK Pin Beater Segments

Designed with two pin beater segments and two perforated Control sheets to ensure removal of heavy trash and impurities with the help of gentle fibre tufts opening.

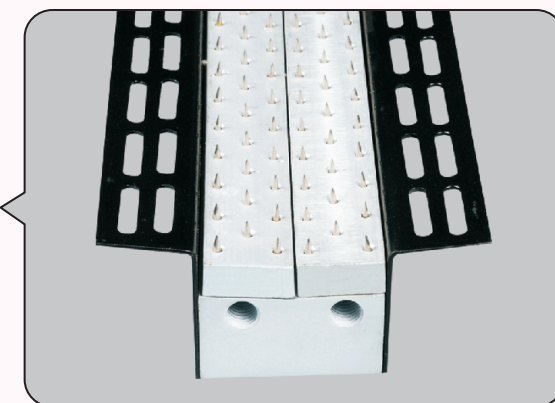
Easy replaceable with two slotted perforated control sheets which reduces fibre rupture and good fibre loss.

Ensures cleaning efficiency upto 20% .

Ensures consistent fibre tuft quality in blow room machines.

Sanmit Model
RSK-1200
RSK-1600

Suitable: Open end & Fine spinning

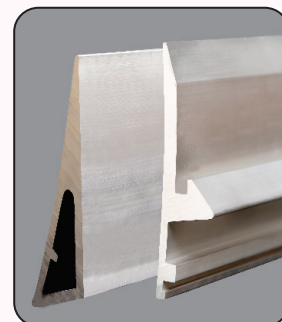
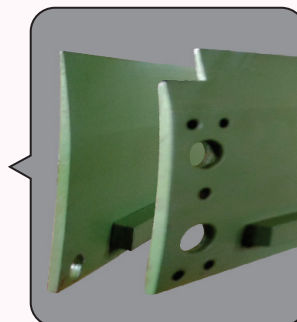


Carding Plates (Steel & Aluminium)



Salient Features

- ❖ Carding Plates (Top / Middle / Bottom) made out of High grade Steel materials
- ❖ Aluminium Plates made out of High grade aluminium alloy extrusion
- ❖ Manufactured by precision machines to obtain perfect inner radius and accuracy
- ❖ Perfect design with stiffener ensures longlife and good rigidity
- ❖ Smooth surface ensures burr free to avoid fibre sticking and loading



STEEL PLATE - ORIGINAL MACHINE

C4 / C4A / C10

S.No.	Description	Drawing No.
A	FRONT - TOP PLATE	Sanmit-A-1001-508
B	FRONT - BOTTOM PLATE	Sanmit-A-1002-509
C	BACK - TOP PLATE	Sanmit-A-1003-510
D	BACK - MIDDLE PLATE	Sanmit-A-1004-511
E	BACK - BOTTOM PLATE	Sanmit-A-1005-520
F	LICKER - IN SHEET	Sanmit-A-1006-884
G	TONGUE PLATE - LICKER - IN	Sanmit-A-1007-885

C10

A	LICKER - IN COVER FRONT	Sanmit-A-1008-488
B	LICKER - IN COVER BACK	Sanmit-A-1009-489
C	FRONT - MIDDLE PLATE	Sanmit-A-1010-491

C50 & C51

A	BOTTOM PLATE	Sanmit-A-1011-523
B	TOP PLATE	Sanmit-A-1012-524
C	LICKER - INCOVER FRONT	Sanmit-A-1013-550
D	LICKER - INCOVER BACK	Sanmit-A-1014-551

HOWA CMS80

A	FRONT - TOP PLATE	Sanmit-A-1015-327
B	FRONT - BOTTOM PLATE	Sanmit-A-1016-326
C	BACK - TOP PLATE	Sanmit-A-1017-329
D	BACK - BOTTOM PLATE	Sanmit-A-1018-328

HOWA CMSK3

A	BACK - BOTTOM PLATE	Sanmit-A-1019-330
B	FRONT - BOTTOM PLATE	Sanmit-A-1020-394
C	BACK - TOP PLATE	Sanmit-A-1021-331
D	BACK - BOTTOM PLATE	Sanmit-A-1022-395

C.1/3

A	FRONT - TOP PLATE	Sanmit-A-1023-1007
B	FRONT - BOTTOM PLATE	Sanmit-A-1024-802
C	BACK - TOP PLATE	Sanmit-A-1025-183
D	BACK - BOTTOM PLATE	Sanmit-A-1026-181

SM.3HA V4 / V3

A	FRONT - BOTTOM PLATE	Sanmit-A-1027-1010
---	----------------------	--------------------

D-K803 - Twin Flat

A	FRONT - BOTTOM PLATE	Sanmit-A-1028-945
B	BACK - BOTTOM PLATE	Sanmit-A-1029-944

ALUMINIUM PLATE - ORIGINAL MACHINE

D-K740 Cast Iron Base

A	FRONT-TOP PLATE	Sanmit-B-2001-714
B	FRONT-MIDDLE PLATE	Sanmit-B-2002-718
C	FRONT-BOTTOM PLATE	Sanmit-B-2003-715
D	BACK-TOP PLATE	Sanmit-B-2004-716
E	BACK-BOTTOM PLATE	Sanmit-B-2005-723

D-K760 Cast Iron Base

A	FRONT - TOP PLATE	Sanmit-B-2006-722
B	FRONT - MIDDLE PLATE	Sanmit-B-2007-717
C	BACK - MIDDLE PLATE	Sanmit-B-2008-724

D-K760 & 780 Twin Flat

A	FRONT - BOTTOM PLATE	Sanmit-B-2009-684
B	BACK - BOTTOM PLATE	Sanmit-B-2010-685

D-K760 & 780 Alu Base (SFD & SFL) & D-K803 - 3F(SFD)

A	FRONT - TOP PLATE	Sanmit-B-2011-720
B	FRONT - MIDDLE PLATE	Sanmit-B-2012-713
C	FRONT - BOTTOM PLATE	Sanmit-B-2013-719

D-K760 & 780 Alu Base (SFD & SFL) & D-K803 - 3F(SFD)

S.No.	Description	Drawing No.
D	BACK - TOP PLATE	Sanmit-B-2014-721
E	BACK - MIDDLE PLATE	Sanmit-B-2015-711
F	BACK - BOTTOM PLATE	Sanmit-B-2016-712

D-K803 - 3F Alu. Base (SFL)

A	BACK - BOTTOM PLATE	Sanmit-B-2017-886
B	BACK - TOP & MIDDLE PLATE	Sanmit-B-2018-721

D-K803 & 903 Twin Flat

A	FRONT - BOTTOM PLATE	Sanmit-B-2019-684
B	BACK - BOTTOM PLATE	Sanmit-B-2020-686

T-C03

A	BACK - BOTTOM PLATE	Sanmit-B-2021-544
---	---------------------	-------------------

C10

A	LICKER - IN COVER PLATE	Sanmit-B-2022-490
---	-------------------------	-------------------

C50 & C51

A	FRONT - BOTTOM PLATE	Sanmit-B-2023-1000
B	BACK - BOTTOM PLATE	Sanmit-B-2024-999
C	LICKER - IN PLATE	Sanmit-B-2025-552

C60

A	BACK - BOTTOM PLATE	Sanmit-B-2026-540
B	FRONT & BACK - TOP PLATE	Sanmit-B-2027-542

HOWA CMH & CMS80

A	FRONT - TOP PLATE	Sanmit-B-2028-746
B	FRONT - BOTTOM PLATE	Sanmit-B-2029-745
C	BACK - TOP PLATE	Sanmit-B-2030-748
D	BACK - BOTTOM PLATE	Sanmit-B-2031-747

MK4 & MK5

A	FRONT - TOP PLATE	Sanmit-B-2032-499
B	FRONT - BOTTOM PLATE	Sanmit-B-2033-500
C	BACK - TOP PLATE	Sanmit-B-2034-497
D	BACK - BOTTOM PLATE	Sanmit-B-2035-498

MK4 & MK5 - Clip Type

A	FRONT - TOP PLATE	Sanmit-B-2036-879
B	FRONT - BOTTOM PLATE	Sanmit-B-2037-880
C	BACK - TOP PLATE	Sanmit-B-2038-876
D	BACK - BOTTOM PLATE	Sanmit-B-2039-877

MK6

A	BACK - BOTTOM PLATE	Sanmit-B-2040-898
B	FRONT - TOP PLATE	Sanmit-B-2041-899

MK7

A	FRONT-TOP PLATE	Sanmit-B-2042-972
B	FRONT-BOTTOM PLATE	Sanmit-B-2043-974
C	BACK-TOP PLATE	Sanmit-B-2044-972
D	BACK-BOTTOM PLATE	Sanmit-B-2045-973

SANMIT C-SYSTEM - PLATE

D-K740

A	FRONT - TOP PLATE	Sanmit-C-3001-507
B	BACK - BOTTOM PLATE	Sanmit-C-3002-108

D-K760 (Cast Iron Base)

A	BACK - BOTTOM PLATE	Sanmit-C-3003-533
B	FRONT - MIDDLE PLATE	Sanmit-C-3004-534

D-K760 Card (Twin flat)

S.No.	Description	Drawing No.
A	FRONT - BOTTOM PLATE	Sanmit-C-3005-677
B	BACK - MIDDLE PLATE	Sanmit-C-3006-679

D-K780

A	BACK - BOTTOM PLATE	Sanmit-C-3007-106
---	---------------------	-------------------

SM.3HA-V3-V4 / C.1-2 & C.1-3

A	FRONT - BOTTOM PLATE	Sanmit-C-3008-175
B	BACK - BOTTOM PLATE	Sanmit-C-3009-181
C	BACK - TOP PLATE	Sanmit-C-3010-183

C10

A	FRONT - TOP PLATE	Sanmit-C-3011-865
B	BACK - MIDDLE PLATE	Sanmit-C-3012-867
C	BACK - BOTTOM PLATE	Sanmit-C-3013-506

MK4 (Cast Iron Base)

A	FRONT - TOP PLATE	Sanmit-C-3014-740
B	BACK - BOTTOM PLATE	Sanmit-C-3015-735

MK4 (Alu.Base)

A	BACK - TOP PLATE	Sanmit-C-3016-737
---	------------------	-------------------

MK5

A	FRONT-TOP PLATE	Sanmit-C-3017-527
B	BACK-BOTTOM PLATE	Sanmit-C-3018-420

HOWA CM80

A	BACK - TOP PLATE	Sanmit-C-3019-441
B	BACK - BOTTOM PLATE	Sanmit-C-3020-440

Toyada Meikin

A	FRONT - TOP PLATE	Sanmit-C-3021-401
B	FRONT - TOP PLATE (Cotton)	Sanmit-C-3022-411
C	FRONT - TOP PLATE (Synthetic)	Sanmit-C-3023-413

Marzoli C40 & C41

A	FRONT - TOP PLATE	Sanmit-C-3024-606
B	BACK - TOP PLATE	Sanmit-C-3025-609
C	BACK - BOTTOM PLATE	Sanmit-C-3026-610

Marzoli CX300

A	FRONT - TOP PLATE	Sanmit-C-3027-616
B	BACK - TOP PLATE	Sanmit-C-3028-613

Ming Cheng

A	FRONT - TOP PLATE	Sanmit-C-3029-476
B	BACK - MIDDLE PLATE	Sanmit-C-3030-479

Rosique

A	FRONT - TOP PLATE	Sanmit-C-3031-834
B	FRONT - MIDDLE PLATE	Sanmit-C-3032-835
C	FRONT - BOTTOM PLATE	Sanmit-C-3033-836
D	BACK - TOP PLATE	Sanmit-C-3034-839
E	BACK - BOTTOM PLATE	Sanmit-C-3035-840

Chinese FA186

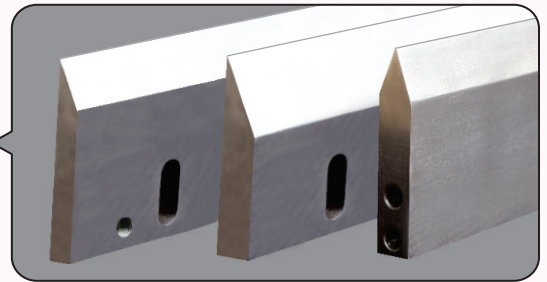
A	FRONT - TOP PLATE	Sanmit-C-3036-597
B	FRONT - BOTTOM PLATE	Sanmit-C-3037-598

Steel Mote Knives



Salient Features

- ❖ Mote Knives made out of high grade alloy steel material En8 / En31.
- ❖ Smooth finish grinding with Hard Chrome Plating ensures smooth fibre transfer.
- ❖ Hardened to 58 to 60 HRC will ensures long life.
- ❖ Precision dimensional accuracy as per OEM ensures perfect fitment to reduce machine downtime.
- ❖ Long life with competitive price.
- ❖ Special knives can be manufactured as per customer requirement for all machines.



BLOW ROOM MOTE KNIFE			
S.No	Blowroom Model	Type	Drawing No
1	CVT 3 & CVT 4	1st Roller Knife	SANMIT - BR - 1001-626
		2nd Roller Knife	SANMIT - BR - 1002-627
		3rd Roller Knife	SANMIT - BR - 1003-626
2	KIRSCHNER BEATER	1st Roller Knife	SANMIT - BR - 1004-583
3	ERM 5 / 5	1st Roller Knife	SANMIT - BR - 1005-622
4	ERM 5 / 6	1st Roller Knife	SANMIT - BR - 1006-623

ORIGINAL MACHINE

SM.3H, SM.3HA / SM.3HA-V3 & SM.3HA-V4

S.No	Description	Drawing No	
A	FRONT C-SYSTEM M/C Original for SM.3H	SANMIT - D - 4001-588	
B	BACK C-SYSTEM M/C Original for SM.3H	SANMIT - D - 4002-589	
C	FRONT-TOP KNIFE	SANMIT - D - 4003-364	
D	BACK-TOP KNIFE	SANMIT - D - 4004-364	
E	BACK-BOTTOM KNIFE	SANMIT - D - 4005-364	
F	UNDER LICKER-IN	SANMIT - D - 4006-274 (12 mm)	
G		1st Knife	SANMIT - D - 4007-418 (15 mm)
H		SANMIT - D - 4008-687 (5 mm)	
I		2nd Knife	SANMIT - D - 4009-273 (8 mm)
J	UNDER LICKER-IN for SM.3H	SANMIT - D - 4010-590 (5 mm)	
K		SANMIT - D - 4011-591 (8 mm)	

SM.3H33, SM.3H61 & SM.3H63			
A	FRONT-TOP KNIFE	SANMIT - D - 4012-582	
B	FRONT-BOTTOM KNIFE	SANMIT - D - 4013-582	
C	BACK-TOP KNIFE	SANMIT - D - 4014-364	
D	BACK-BOTTOM KNIFE	SANMIT - D - 4015-364	
E	UNDER LICKER-IN	1st Knife	SANMIT - D - 4016-801 (8.5 mm)
F		2nd Knife	SANMIT - D - 4017-803 (5 mm)

C.1/2 & C.1/3			
A	FRONT-TOP KNIFE	SANMIT - D - 4018-364	
B	BACK-TOP KNIFE	SANMIT - D - 4019-364	
C	UNDER LICKER-IN	1st Knife	SANMIT - D - 4020-274 (12 mm)
D		SANMIT - D - 4021-418 (15 mm)	
E		SANMIT - D - 4022-687 (5 mm)	
F		2nd Knife	SANMIT - D - 4023-273 (8 mm)

SM.H			
A	FRONT-TOP KNIFE	SANMIT - D - 4024-580	
B	UNDER LICKER-IN	SANMIT - D - 4025-451	

D-K740			
A	BACK-TOP KNIFE	SANMIT - D - 4026-492	
B	LCC C-FACTOR	SANMIT - D - 4027-826	
C	FEEDER ROLLER KNIFE (BEFORE UNDER COMBING SEGMENT)	SANMIT - D - 4028-577 (20 mm)	

D-K760 (CAST IRON BASE)			
A	BACK-TOP KNIFE	SANMIT - D - 4029-828	
B	FRONT-TOP KNIFE	SANMIT - D - 4030-829	
C	FRONT-BOTTOM KNIFE	SANMIT - D - 4031-830	

D-K760, D-K780 (3 Flat C-System) D-K800 (Twin flat)			
A	FRONT-TOP KNIFE	SANMIT - D - 4032-495	
B	FRONT-BOTTOM KNIFE	SANMIT - D - 4033-495	
C	BACK-TOP KNIFE	SANMIT - D - 4034-494	
D	I.C.C NEW C-SYSTEM SUCTION KNIFE	SANMIT - D - 4035-674	
E	L.C.C C-FACTOR	SANMIT - D - 4036-826	
F	UNDER LICKER-IN	1st Knife	SANMIT - D - 4037-579 (8mm)
G		2nd Knife	SANMIT - D - 4038-512 (5mm)

D-K803 (3 Flat C-System) & D-K903 (Twin Flat System)

S.No	Description	Drawing No	
A	FRONT-TOP KNIFE	SANMIT - D - 4039-495	
B	FRONT-BOTTOM KNIFE	SANMIT - D - 4040-495	
C	BACK-TOP KNIFE	SANMIT - D - 4041-494	
D	UNDER LICKER-IN	1st Knife	SANMIT - D - 4042-536 (9 mm)
E		2nd Knife	SANMIT - D - 4043-671 (6 mm)
F		3rd Knife	SANMIT - D - 4044-671 (6 mm)

D-K800			
A	STRIPPING FILLET KNIFE	SANMIT - D - 4045-996	

T-C03 / 05 / 5-3 / 06 / 08			
A	FRONT-TOP KNIFE	SANMIT - D - 4046-538	
B	FRONT-BOTTOM KNIFE	SANMIT - D - 4047-538	
C	BACK-SUCTION-TOP KNIFE	SANMIT - D - 4048-725	
D	BACK-TOP KNIFE	SANMIT - D - 4049-538	
E	UNDER LICKER-IN	SANMIT - D - 4050-450	
F	UNDER LICKER-IN - for TC5 Only	SANMIT - D - 4051-1006	

T-C11			
A	C-SYSTEM-SUCTION HOOD KNIFE	SANMIT - D - 4052-578	

T-C360			
A	UNDER LICKER-IN KNIFE	SANMIT - D - 4053-578	

C50 & C51			
A	FRONT-TOP KNIFE	SANMIT - D - 4054-619	
B	FRONT-BOTTOM KNIFE	SANMIT - D - 4055-619	
C	BACK-TOP KNIFE	SANMIT - D - 4056-619	
D	UNDER LICKER-IN	1st Knife	SANMIT - D - 4057-620 (10 mm)
E		2nd Knife	SANMIT - D - 4058-620 (10 mm)

C4			
A	FRONT-ECC KNIFE	SANMIT - D - 4059-672	
B	FRONT-ICC KNIFE	SANMIT - D - 4060-673	
C	BACK-ECC KNIFE	SANMIT - D - 4061-672	
D	BACK-ICC KNIFE	SANMIT - D - 4062-673	
E	UNDER LICKER-IN	1st Knife	SANMIT - D - 4063-576 (8 mm)
G		2nd Knife	SANMIT - D - 4064-576 (8 mm)

MK4			
A	UNDER LICKER-IN KNIFE	SANMIT - D - 4065-264	

MK5 & MK6			
A	FRONT-KNIFE	SANMIT - D - 4066-780	
B	BACK-KNIFE	SANMIT - D - 4067-780	
C	UNDER LICKER-IN TRASH - KNIFE	SANMIT - D - 4068-496 (6 mm)	
D	UNDER LICKER-IN	SANMIT - D - 4069-455 (10 mm)	

HOWA			
A	UNDER LICKER-IN KNIFE	SANMIT - D - 4070-587	

CHINESE			
A	UNDER LICKER-IN KNIFE - FA221-D	SANMIT - D - 4071-628	
B	UNDER LICKER-IN KNIFE - FA225	SANMIT - D - 4072-628	

WIRKBAU			
A	UNDER LICKER-IN	1st Knife	SANMIT - D - 4073-575 (12 mm)
B		2nd Knife	SANMIT - D - 4074-574 (8 mm)

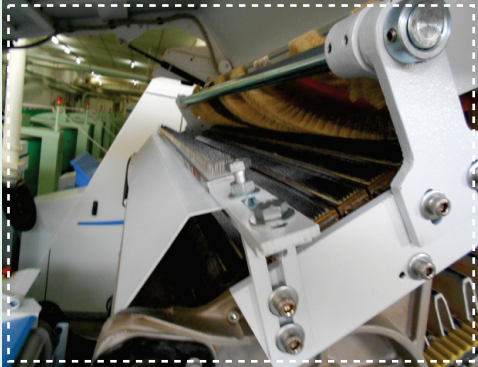
MARZOLI CX300			
A	UNDER LICKER-IN	1st Knife	SANMIT - D - 4075-776
B		2nd Knife	SANMIT - D - 4076-776

SANMIT C - SYSTEM KNIVES			
A	SM.3HA / V3 / V4 & C.1/2, C.1/3	SANMIT - E - 5001-173	
B	D-K740, 760, 780, 800, 803 & 903	SANMIT - E - 5002-102	

Brush Conversion Kit



T-C03 / 05 / 07 / 08 / 10 / 11 / 15



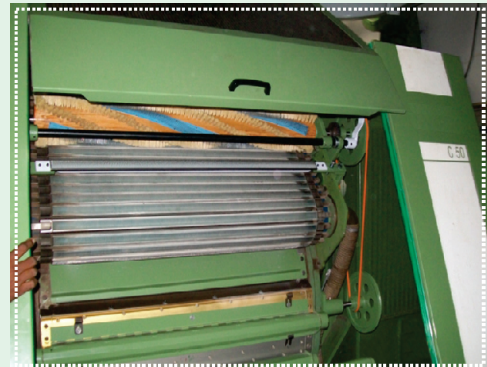
D-K760 / 780 / 803 / 903



C60 / 61 / 70



C50 / 51



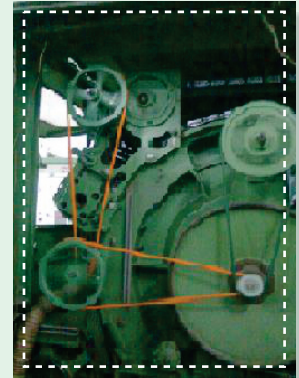
Advantage – Technical

- ❖ To maintain the Existing Flat Tops for carding action free from Seed Cots, Short fibers, Husk and Micro Dust.
- ❖ To reduce the NEPS generation caused by accumulated Microdust in the foundation which is a perennial problem.
- ❖ To allow clean revolving flats to enter carding zone (Between revolving flats & cylinder) to take more NEPS, kities and short fibers to reduce IPI.
- ❖ To avoid waste of power of compressed air and man power used for cleaning.
- ❖ One wooden roller with 4 rows of imported Mexican Fibre Bristles and 2 rows of fillets, shall effectively remove the Micro Dust and seed cots, Leaf bits and other foreign materials.
- ❖ Deposition of Titanium D-Oxide on the flats is removed by the system to achieve consistent Quality.

Brush Conversion Kit



C 4 / C10



CHINESE FA221D
& OTHER MODELS



MK - 4



ACCESSORIES



BRUSH PULLEY CONVERSION KIT (Drive from Cylinder)

Gear Box will be Removed

SM.3H / SM.3HA / SM.3HA-V3 / SM.3HA-V4



Salient Features

- ❖ Gear Box drive for existing Brush conversion will be removed.
- ❖ Drive will be from Main Cylinder
- ❖ Substantial Power Saving due to removal of gear box motor.
- ❖ Low maintenance due to removal of gear box
- ❖ During power cut, revolving flat will be clean till Cylinder stops.

New Generation C-System



SFL (Above Lickerin) & SFD (Above Doffer)

SFL (Above Lickerin)

Stationary flats are designed from coarser PPSI - bottom to Finer PPSI - top gives excellent pre opening of heavier fibre tufts. Mote knife and suction device removes trash particles and even distribution of fibres.

SFD (Above Doffer)

Finer PPSI stationary flats, mote knife and smooth finish suction device helps to improve classmate results.

Salient Features

Machine originality will be maintained during modification.

Imported high quality stationary flat tops wires ensures yarn sliver quality and consistency in life.

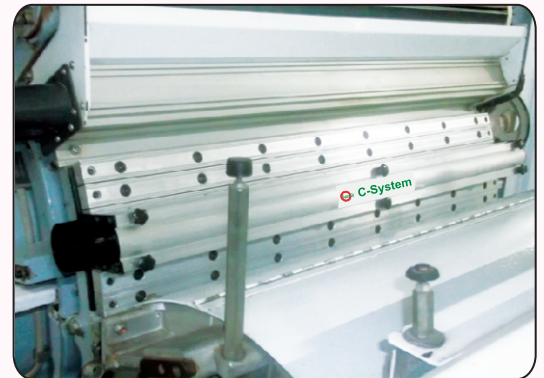
It gives good parallelization of fibres and results reduces the carding strain and increases the life of cylinder wire and revolving flats.

Sturdy Al. base beam with Individual adjustment of stationary flats and mote knife makes accurate gauging which helps carding quality and production at higher speeds.

Smooth finish suction device helps to remove micro dusts, short fibres and motes and help to maintain clean suction in the machine.

No gap between each flat prevents dust liberation. No need for sticking forms between each flat.

Big suction device prevent air curling which ensures no suction chocking during card running. Aluminium flats are made out of alloy grade smooth finish extrusion materials which gives flat stability.



Recommendation & Scope of Supply

Card Model	Above Doffer (SFD)	Above Licker-In (SFL)	Pre Opening Combing Segments (Under Licker-In)	Process
D-K715 & D-K740	5 F + 1 K + Suction	7 F + 1 K + Suction	4 Segments + 2 K	Cotton
	9 F	11 F	4 Segments + 2 K	Synthetic
D-K760 D-K780, D-K800 & D-K803 (Single Licker in)	6 F + 1 K + Suction	8 F + 1 K + Suction	-	Cotton / Synthetic
D-K803 & D-K903 (3 Licker - in - Twin Flat)	6 F + 1 K + Suction	6 F + 1 K + Suction	-	Cotton / Synthetic
D-K706 (Cast Iron base C-System)	6 F + 1 K + Suction	7 F + 1 K + Suction	-	Cotton / Synthetic
MK - 3	6 F + 1 K + Suction	12 F + 1 K + Suction	-	Cotton / Synthetic
MK - 4 & MK - 5	6 F + 1 K + Suction	8 F + 1 K + Suction	4 Segments + 2 K	Cotton / Synthetic
C4 & C10	4F + 1 K + Suction	8 F + 1 K + Suction	-	Cotton / Synthetic
C50 & C51	7 F + 1 K + Suction	7 F + 1 K + Suction	4 Segments + 2 K	Cotton / Synthetic
SM.3H, SM.3HA SM.3HA - V3 & SM.3HA - V4	5 F + 1 K + Suction	-	Economic Model Combing Segment Full Set	Cotton / Synthetic
C.1/2, C.1/2a, C.1/3 (Economic model)	6 F + 1 K + Suction	3 F	Economic Model Combing Segment Full Set	Cotton / Synthetic
Chinese - FA201	7 F + 1 K + Suction	11 F + 1 K + Suction	-	Cotton
Chinese - FA186	5 F	12 F	-	Synthetic
HOWA - CMS80 HOWA - CMSK3 / Toyoda Meikin	6 F	12 F	-	Synthetic
Toyoda - Meikin	6 F + 1 K + Suction	-	-	Cotton

** F - Flats / K - Knife

5 Flats + 1 Mote Knife Conversion suitable for ❖ **SM.3HA V4**

Suitable for Cotton

❖ **SM.3HA V3**

❖ **SM.3HA**

❖ **SM.3H**



Upgrade your Carding Machine to achieve

- **IPI Reduction Minimum - 10% to Maximum 20%**
- **Clasimate Improvement (A1 & A2 fault) upto 20% from Existing Quality**

*** Result will be achieved on identical Testing Conditions on same Carding Machine (Before & After)**

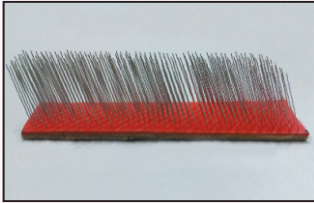
Advantages

- ❖ Stationary Flat Tops Design and Wire geometry (wire profile) - Same as European (Latest design).
- ❖ Materials - Imported from Europe in the form of 50 Kg roll like Cylinderwire (Teeth Cutting & Hardening done in Europe like Cylinder wire).
- ❖ Design of this C-System is Wedge sharper and the possibilities for bending and twisting is negligible.
- ❖ Dust free C-System working atmosphere is maintained.
- ❖ Smooth Aluminium Suction device maintains clean suction.
- ❖ 8 point gauging system maintains Zero gauge setting (Perfect gauge will be achieved during installation).
- ❖ Better aesthetics gives an original look.
- ❖ Minimum quality will be achieved 10% to 20% from existing results on identical testing conditions.
- ❖ More no of stationary flat tops will lead to better parallelization and removes fibre hooks – results in improved winding and spinning efficiency.
- ❖ Will support to improve Classmate results (A1 & A2 fault level).

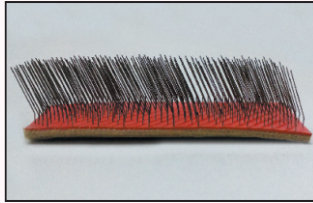
Fillets



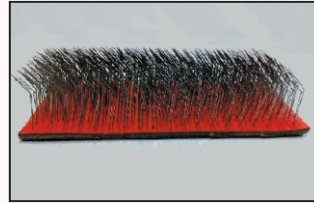
Sanmit Products



T-AP-26

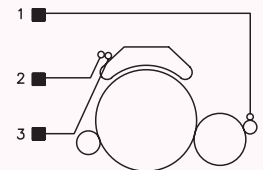


T-DP-18-1



T-DS-609

S.No	Description	Specification	Qty/card
1.	Doffer cleaning fillet T-AP-26	15 mtrs x 16 mm	15 mtrs
2.	Cleaning fillet T-DP-18-1	10.5 x 26 mm	10.5 mtrs
3.	Stripping fillet T-DS-609	9.0 mtrs x 38 mm	9 mtrs



Also available for :

- ◆ SM.H / SM.3H / SM.3HA / SM.3HA - V3/ SM.3HA - V4, SM.3H33 ◆ C 50
- ◆ C.1/2 & C.1/3 ◆ C 60
- ◆ C4 ◆ MK4 & MK5 & MK6

SOLUTION for Minimum Replacement Cost & Maximum Benefits

To maintain consistent Quality & Long life - Replace the following products as per OEM Schedule

- ❖ Stationery Flat Tops
- ❖ Mote Knives
- ❖ Aluminium & Steel Plates
- ❖ Fillets



Sanmit Card Clothing India Pvt. Ltd.,

Fact. & Admn. Off. : S.F. No. : 61/2, Plot No. 41,
Mahatma Gandhi Road, S.I.H.S Colony Road (Via),
Neelikonampalayam (P.O.), Coimbatore - 641 033, INDIA.

Mobile : +91 95009 90591
+91 87540 44138
+91 87540 44130
Fax : +91-422- 2273833

Email : ram@sanmitcard.com
prabu@sanmitcard.com
info@sanmitcard.com
sales@sanmitcard.com
Web : www.sanmitcard.com

The specifications are given in the catalogue based on Market standard
If any specific enquiry please contact our Sales Department.